

IMPEL CAED Project

Description of the use of decision-making flowcharts and practical tables

Second Training Session

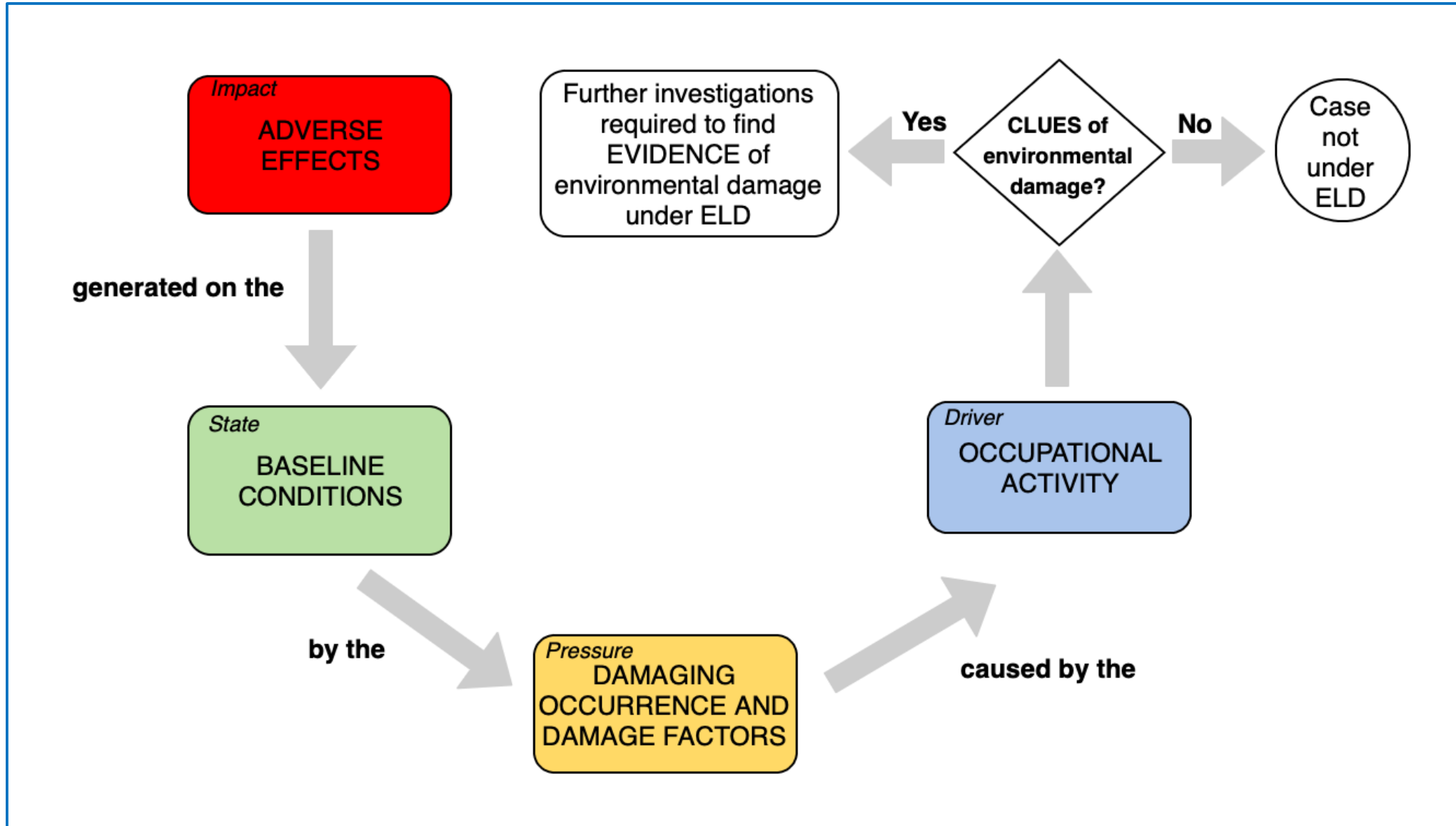
February 9th, 2022, 9:30h - 13:30h CET (On-line training)

Francesco Andreotti

Italian National Institute for the Environmental Protection and Research (ISPRA), Italy

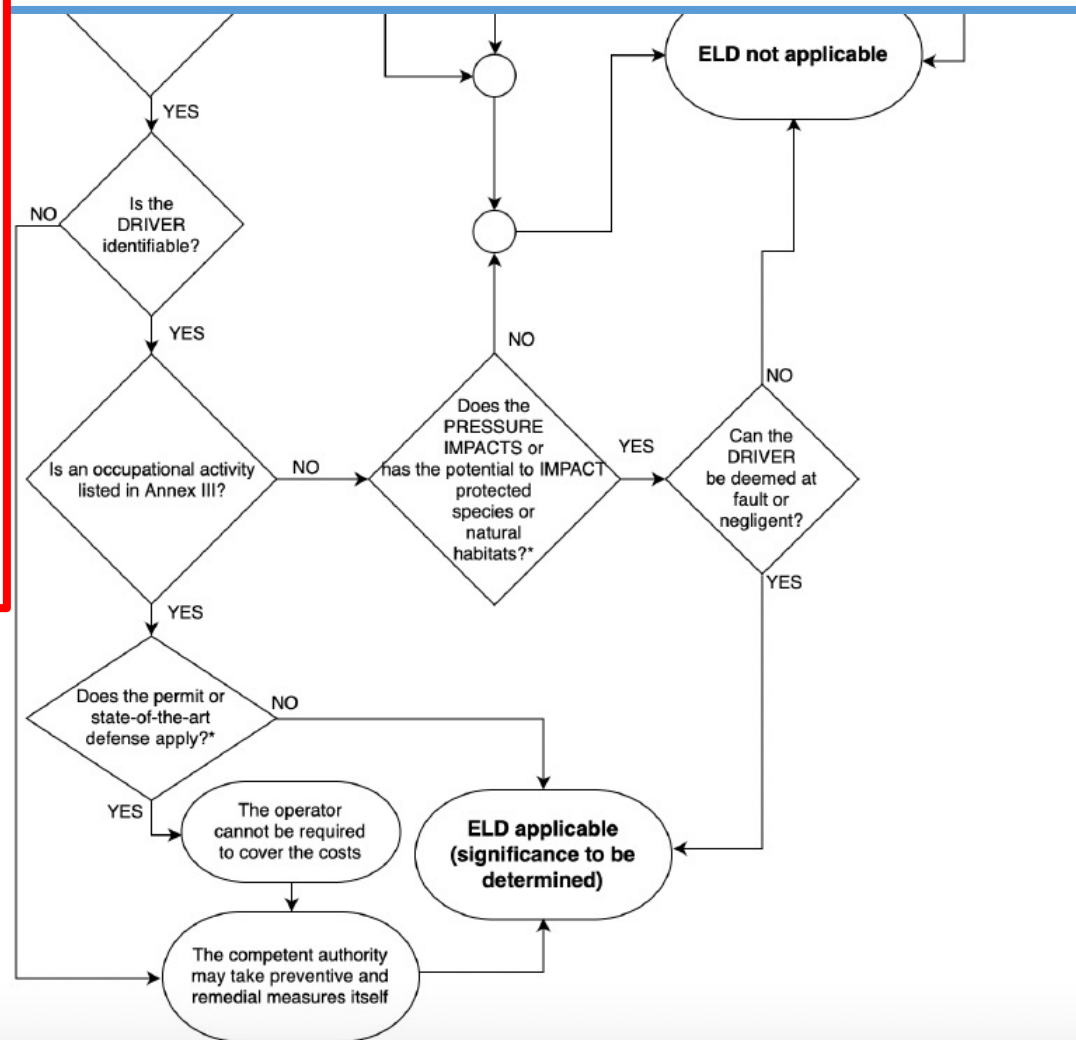
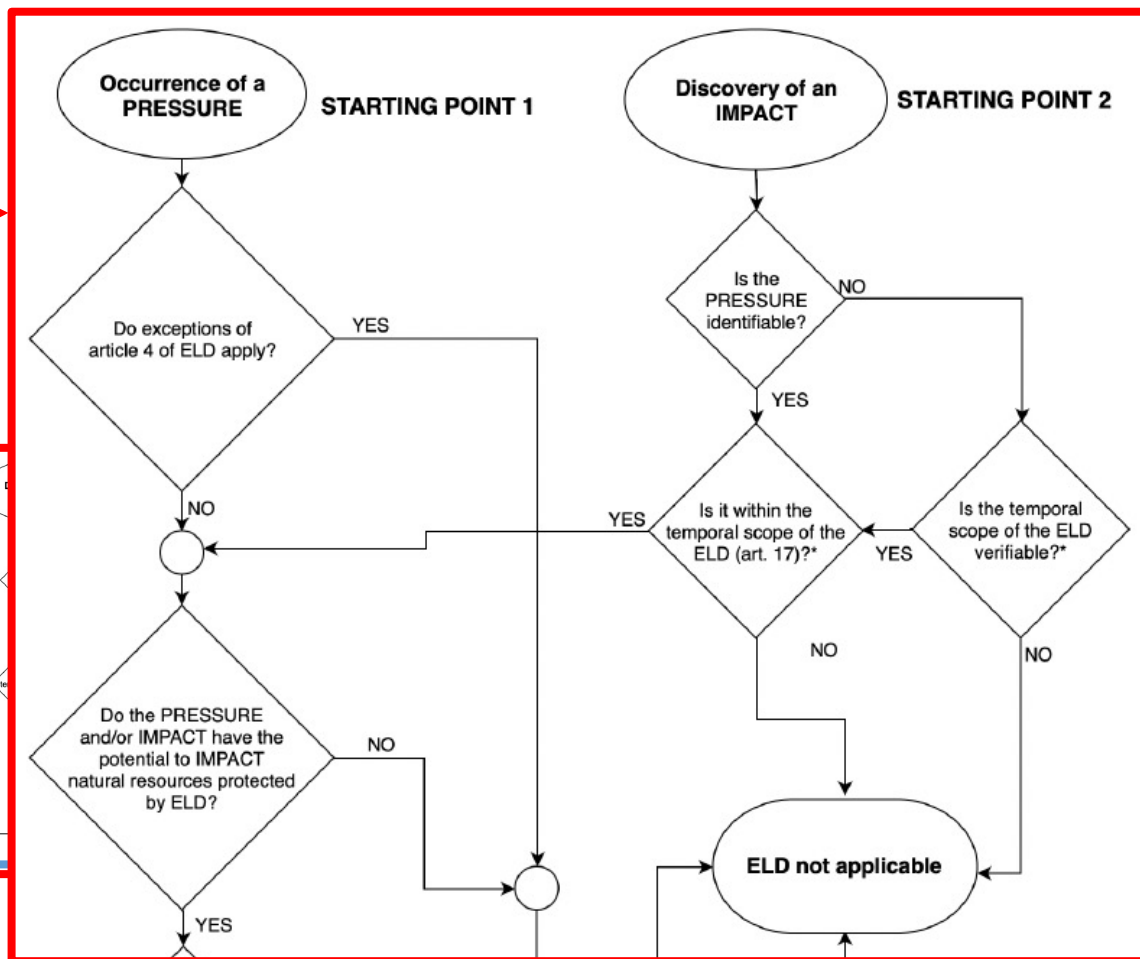
IMPEL CAED Project Manager

DPSIR model adapted to damage assessment



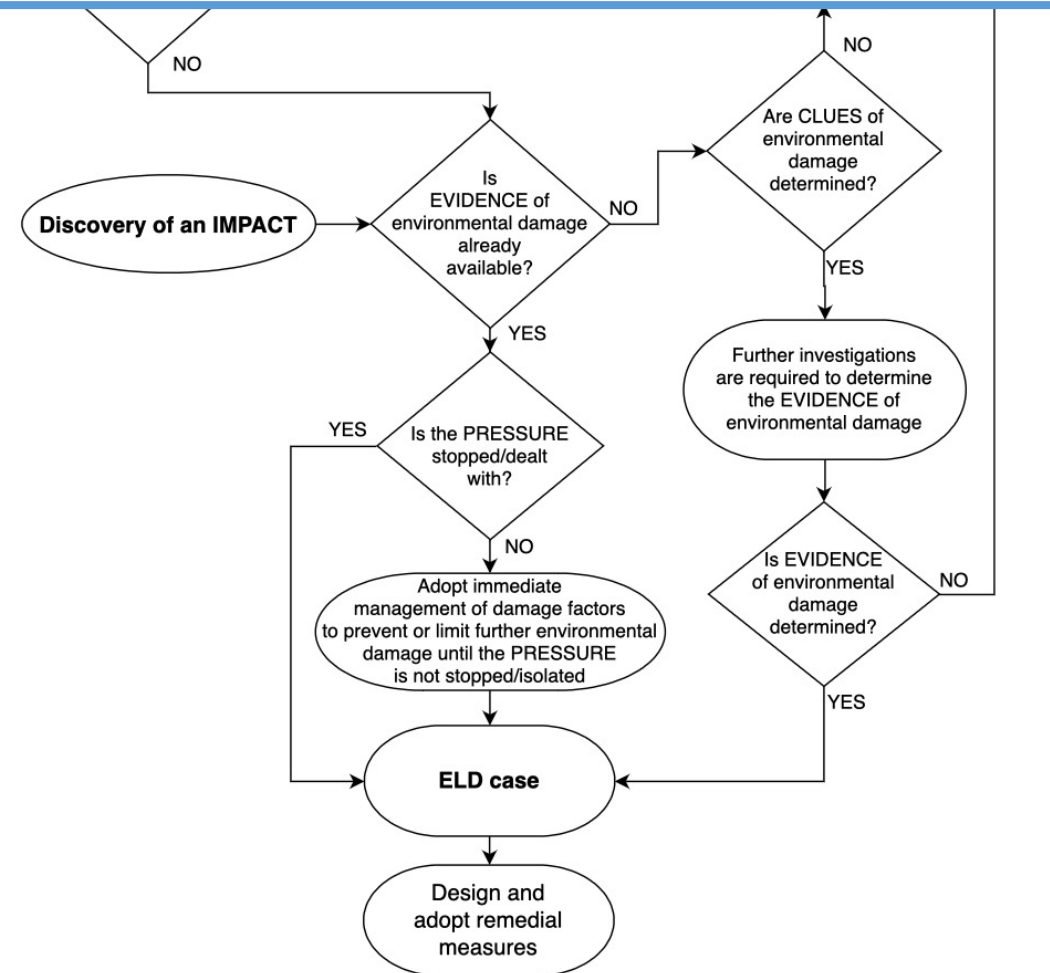
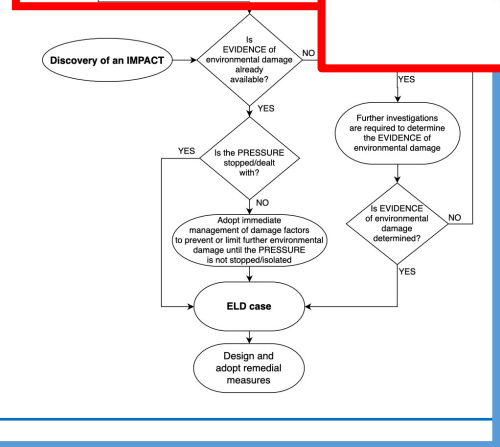
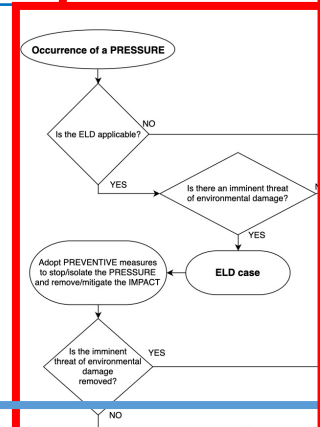
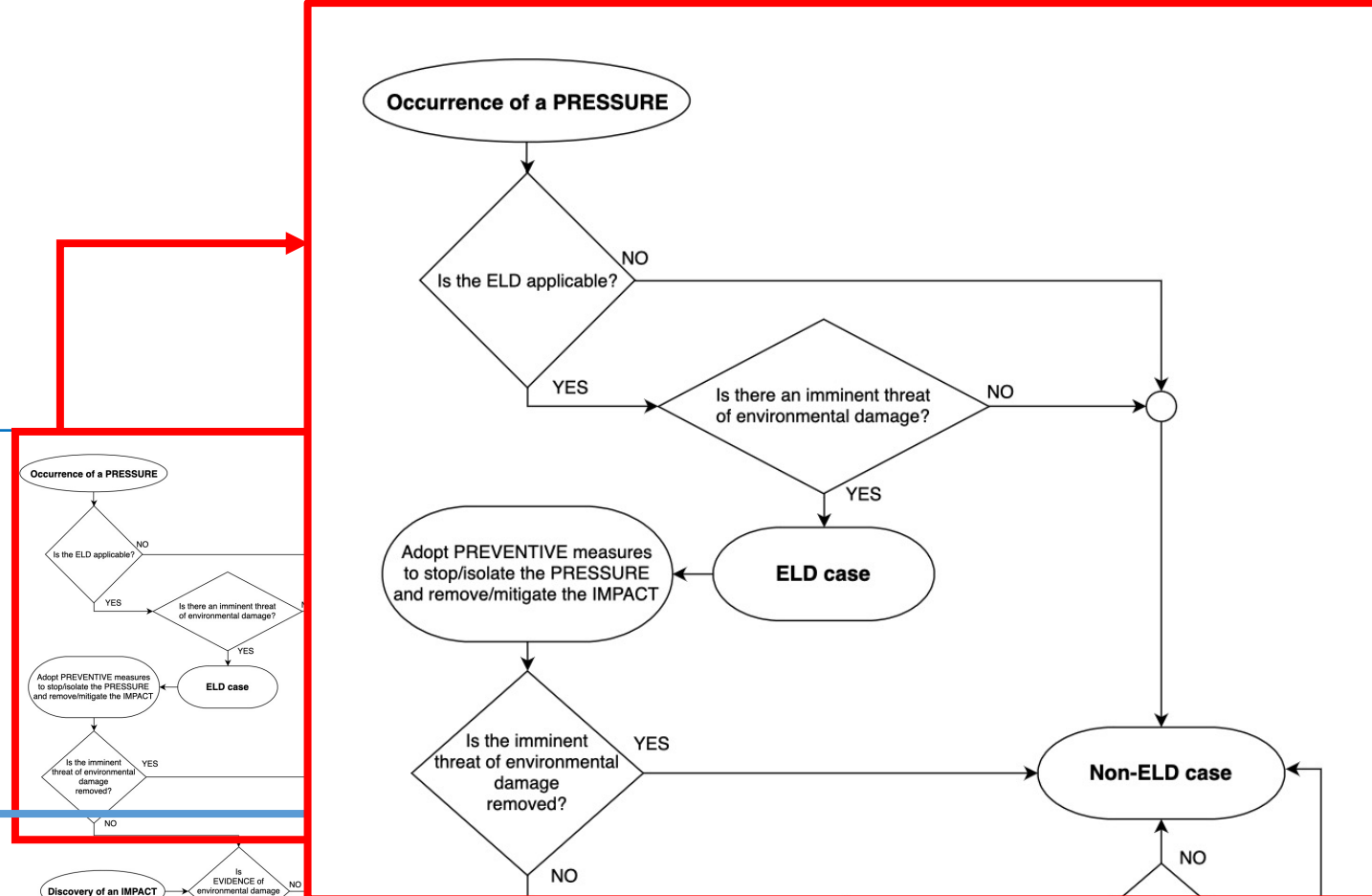
Decision-making flowcharts

Flowchart for ELD applicability



Decision-making flowcharts

General



Practical tables

Practical Tables - WATER

IMPACT

OBJECTIVE	INDICATOR	DESCRIPTION	NOTES	EVALUATION	OVERALL JUDGEMENT
Precondition for the use of the tables for Water	IMPACT ON “Water Bodies” (or areas of water included in the water bodies) delineated by a Member State for the purpose of implementing the Water Framework Directive and the Marine Strategy Framework Directive (for coastal and territorial marine waters)				
1	ALL WATERS				
SURFACE WATERS (skip this section only in case of groundwater)					
COASTAL and MARINE WATERS (skip this section only in case of inland surface waters and groundwater)					
GROUNDWATER (skip this section only in case of surface waters)					

STATE

OBJECTIVE	INDICATOR	DESCRIPTION	NOTES	EVALUATION	OVERALL JUDGEMENT
ALL WATERS					
COASTAL and MARINE WATERS (skip this section in case of inland surface waters and groundwater)					
GROUNDWATER (skip this section in case of surface waters)					

Practical Tables - LAND

IMPACT


OBJECTIVE	INDICATORS	DESCRIPTION / THRESHOLDS	NOTES	EVALUATION	OVERALL JUDGEMENT
Precondition for the use of the tables for Land	IMPACT on "Land" that potentially "contaminate" it by the introduction of substances, preparations, organisms or micro-organisms.				
Evaluate the existence (actual or theoretical) of a pathway between the source of potential damage and the human receptors	2				
Evaluate the existence of a Source-Pathway-Receptor linkage					
Evaluate the existence of harm to human health (independent of the number of people) and the relevance, reliability and quality of data / information on the impacts					

STATE

OBJECTIVE	INDICATORS	DESCRIPTION / THRESHOLDS	NOTES	EVALUATION	OVERALL JUDGEMENT
Know the baseline of land use, land type and substances/parameters	3				
Evaluate whether known baseline data are useful to demonstrate adverse effects on land					
Know the pre-existing pressure level on land					

Practical Tables - PRESSURE (ALL)

OBJECTIVE	INDICATOR	DESCRIPTION	NOTES	EVALUATION	OVERALL JUDGEMENT
Precondition for the use of the tables for PRESSURE	PRESSURE which complies with the temporal application of ELD (art. 17)				
LAND (this section refers only to Land)					
Describe the general characteristics and evaluate relevance, reliability and quality of data/information on the damaging occurrence and/or damage factors	Type of damaging occurrence <i>E.g. forest cuts, wood/plant fires, collection or removal of fauna/flora, water/groundwater withdrawals, civil works, extraction of quarry material, beach nourishment, discharges/spillages into surface waters/groundwater/land, abandoned/buried hazardous waste, unregulated/uncontrolled landfill, creation of road structures and setting up of renewable energy production plants, etc.</i>	Data/information not available			
		Non-compliance with obligations/emission limits, illegal activity (specify it)			
		Accident/Incident (specify it)			
		Other (specify it)			
	Timeline of the damaging occurrence	Data/information not available			
		Ceased			
		On-going – continuous			
		On-going – intermittent			
	Natural resource impacted by the damaging occurrence	Data/information not available			
		Data not relevant for the type of pressure identified			
		Air (specify it)			
		Water (specify it)			
		On, in, under land (specify it)			
		Protected habitats or species			
		Other (specify it)			
	Location of the damaging occurrence	Data/information not available			
		(Specify geographical coordinates and any useful information to demonstrate a connection with the site or route of the occupational activity: e.g. onshore/offshore, upstream, upwind, adjacent with, overlying, etc.)			
	Spatial extent of the damaging occurrence and damage factors	Data/information not available			
		Localised/Point source (specify it)			
		Widespread/Diffuse (specify it)			
	Type of adverse effect to the natural resource	Data/information not available			
		Direct (specify it)			
		Indirect (specify it)			
	Accuracy and reliability of data including sampling and analysis, procedures and quality assurance	Data/information not available			
		Adequate (Specify why: e.g. sampling and analysis of substances compliant with ISO/IEC 17025, sampling and analysis of hazardous wastes pursuing national/international standards, etc.)			
		Not adequate (specify why)			



European Union Network for the Implementation and Enforcement of Environmental Law

CAED project 2021/22

Practical Tables - DRIVER (ALL)

OBJECTIVE	INDICATOR	DESCRIPTION	NOTES	EVALUATION	OVERALL JUDGEMENT
<p><i>Objective</i></p> <p>Evaluate the link between the occupational activity and the adverse effects</p>	<p>Consistency of substances and quantities used / handled / produced by the occupational activity with the damage factors/adverse effects</p>	Consistent with the characteristics of the damage factors/adverse effects			
		Not consistent with the characteristics of the damage factors/adverse effects			
		No substances used/handled/produced			
		Not relevant			
		Data/information not available			
	<p>Consistency of operations carried out at the occupational activity with the damage factors/adverse effects</p>	Consistent with the characteristics of the damage factors/adverse effects			
		Not consistent with the characteristics of the damage factors/adverse effects			
		Not relevant			
		Data/information not available			
	<p>Consistency of waste type, composition and quantities managed / produced with the damage factors/adverse effects</p>	Consistent with the characteristics of the damage factors/adverse effects			
		Not consistent with the characteristics of the damage factors/adverse effects			
		No waste managed/produced			
		Not relevant			
		Data/information not available			
	<p>Consistency of pumping / diversion / or other surface or groundwater flow modification with the damage factors/adverse effects</p>	Consistent with the characteristics of the damage factors/adverse effects			
		Not consistent with the characteristics of the damage factors/adverse effects			
		There are no pumping / diversion / or other water flow modifications			
		Not relevant			
		Data/information not available			
	<p>Consistency of type, composition and quantities of discharges to water or land with the damage factors/adverse effects</p>	Consistent with the characteristics of the damage factors/adverse effects			
		Not consistent with the characteristics of the damage factors/adverse effects			
		There are no discharges to water or land			
		Not relevant			
		Data/information not available			
	<p>Potential exposure of natural habitats and protected species, surface waters, groundwater or land to adverse effects (only affected resources have to be considered)</p>	Yes (specify why)			
		No (specify why)			
		Data/information not available			
		Not relevant			
	<p>Presence of other activities which could be associated with the damaging occurrence/damage factors or the type of damage factors/adverse effects</p>	Yes (specify why)			
		No (specify why)			
		Data/information not available			
		Not relevant			

Colour Code – Notes, evaluation, Overall Judgement

Colour code for the "Notes" and "Evaluation" columns
Favourable to the identification of the clue (text box)
Unfavourable to the identification of the clue (text box)
Data/information not available (express the possibility/legitimacy/needs/benefits of collecting/requiring further data/information) (text box)
Auxiliary data/information (text box)
Not available data/information (empty box)
Not relevant data/information (empty box)

Colour code for the "Overall Assessment" column
Clues of environmental damage (text box)
Absence of clues of environmental damage (text box)
Data/information to identify clues of damage not sufficient (express the possibility/legitimacy/needs/benefits of collecting/requiring further data/information through further investigations) (text box)

Practical Tables - OUTPUT

DESCRIPTION and JUDGEMENT OF THE CASE	
Site/location	
Damaging Occurrence	
Damage Factors	
Natural Resources Impacted	
Adverse Effects on Reference Concepts	
Other Available Data/information	
Overall Judgement	
Further Investigations Required	

In the overall judgement box the types of clues determined - ***CLUES OF NATURAL RESOURCE (CNR) or CLUES OF DAMAGING OCCURRENCE AND DAMAGE FACTORS + NATURAL RESOURCE (CDODF+NR)*** - should be indicated and a brief description of the outcomes should be provided

IMPEL CAED Project

Training Session

***BREAK of 15 minutes UNTIL
11:52 CET***

Francesco Andreotti

Italian National Institute for the Environmental Protection and Research (ISPRA), Italy

IMPEL CAED Project Manager